

# MID-CONTINENT ENERGY EXCHANGE

## Oil & Gas Asset Auctions



Lot 19 Data Packet

**Eaton Trust**

Operated Lease in  
Rooks County, KS

***In this Document:***

[Summary](#)  
[Production](#)  
[Maps](#)



# ***Lot Summary***

County/State: Rooks County, KS

Legal Description: Sec 18-10S-20W

Acres: 160

Lease Name: Eaton Trust

Asset Type: Operated Lease

Gross Working Interest: 100%

Net Revenue Interest: 82%

API: Eaton Trust #1 - API 15-163-14050

Eaton Trust #2 - API 15-163-24188

Lease #: 142931

Operator: Paradise Creek Oil & Gas Co

Disclaimer: Bidders must conduct their own due diligence prior to bidding at the auction. Bidders shall rely upon their own evaluations of the properties and not upon any representation either oral or written provided here. This is a summary of information provided by the seller to Mid-Continent Energy Exchange.



***Production***





EATON TRUST 142931

Lease #: 142931

## Lease and Production Information

State	County	Operator			
KS	ROOKS	PARADISE CREEK OIL & GAS			
Location	Meridan	Quarter Call	Formation	Horizontal	Production Months
18-10S-20W	6th (west -96.28)			No	94
			Oil		Gas
First Prod Date			2012-08-01		
Last Sale			2020-05-01		
Daily Rate			2.62		
MoM Change			160		
YoY Change			315		
Cumulative			8307		

## Production Snapshot

Month	BOPM	MCFPM
06-2019	148	
07-2019		
08-2019		
09-2019		
10-2019	160	
11-2019		
12-2019		
01-2020		
02-2020		
03-2020	163	
04-2020		
05-2020	160	
Average	158	

## Annual Averages

Year	Avg BOPM	Avg MCFPM
2016	53	
2017	41	
2018	40	
2019	39	
2020	65	



# EATON TRUST 142931 - Production Plot





EATON TRUST 142931

Associated Wells

Total Well Count: 2

Well Name	API		Operator			Type	Status
EATON TRUST 1	15163240500000		PARADISE CREEK OIL & GAS			Oil	Producing
Location	Spot	Foot-NS	Foot-EW	Foot-ref	Zone		
18-10S-20W	SW SE NE SE	1430	-530	SE	ARBUCKLE, LANSING KANSAS CITY		
Spud	Completion		First Production				
2012-06-21	2012-08-04						
Elevation	MD	TV-TD	Cmpl-Top	Cmpl-Btm	PBTD	Drill-Dir	Lateral
2151 KB		3900					
Prod Csg	Production: New 5.5", 15.5# @ 3898 w/ 130 sx ASC & w/ 500 gl mud flush. Approved: 9/26/2012 Protect Casing: 225 sx of 60/40 poz w/ 4% gel, 14lbs flo-seal from ( 0-1615 ). Approved: 9/26/2012 Packer @ Tbg. @ 3468 Tbg. Size 2.875. Approved: 9/26/2012						
Surf Csg	Surface: New 8.625", 24# @ 308 w/ 170 sx common & w/ 3%cc, 2% Gel. Approved: 9/26/2012						

## Well Test

Date	BOPD	MCFPD	BWPD
2012-08-13	60		13

Well Name	API		Operator			Type	Status
EATON TRUST 2	15163241880000		PARADISE CREEK OIL & GAS			Oil	Producing
Location	Spot		Foot-NS	Foot-EW	Foot-ref	Zone	
18-10S-20W	NW SE NE SE		1840	-335	SE	ARBUCKLE	
Spud		Completion		First Production			
2014-03-25		2014-04-23					
Elevation	MD	TV-TD	Cmpl-Top	Cmpl-Btm	PBTD	Drill-Dir	Lateral
8 KB		3818					
Prod Csg	Production: New 5.5", 15.5# @ 3816 w/ 200 sx ASC & w/ . Approved: 5/27/2014 Perforate: 250 sx of 60/40 poz w/ 6% gel from ( 3722-3740 ). Approved: 5/27/2014 Packer @ Tbg. @ 3780 Tbg. Size 2.375. Approved: 5/27/2014 DST, LOGS, & SAMPLES: DSTs: (Yes						
Surf Csg	Surface: New 8.625", 23# @ 295 w/ 170 sx commom & w/ 2%gel, 3%cc. Approved: 5/27/2014						

## Well Test

Date	BOPD	MCFPD	BWPD
2014-05-02	20		0



## Well Search: Report

Search Criteria - States: KS Counties: ROOKS Sections: 18 Townships: 10S Ranges: 20W Well: 24050, 24188

Well / API #	Type	Status	Formation	Lease#	Location	Spot	Intent Expires	Spud	Completion	Elev	TV-TD	MD	Horiz
<b>County: ROOKS</b>													
<u>Operator: PARADISE CREEK OIL &amp; GAS</u>													
EATON TRUST 1 / 15163240500000	Oil	Producing	ARBUCKLE, LANSING KANSAS CITY	142931	18-10S-20W	SW SE NE SE		06-2012	08-2012	2151 KB	3,900		
EATON TRUST 2 / 15163241880000	Oil	Producing	ARBUCKLE	142931	18-10S-20W	NW SE NE SE		03-2014	04-2014	8 KB	3,818		

**PARADISE CREEK OIL & GAS - Well Count 2**

**ROOKS County - Well Count 2**

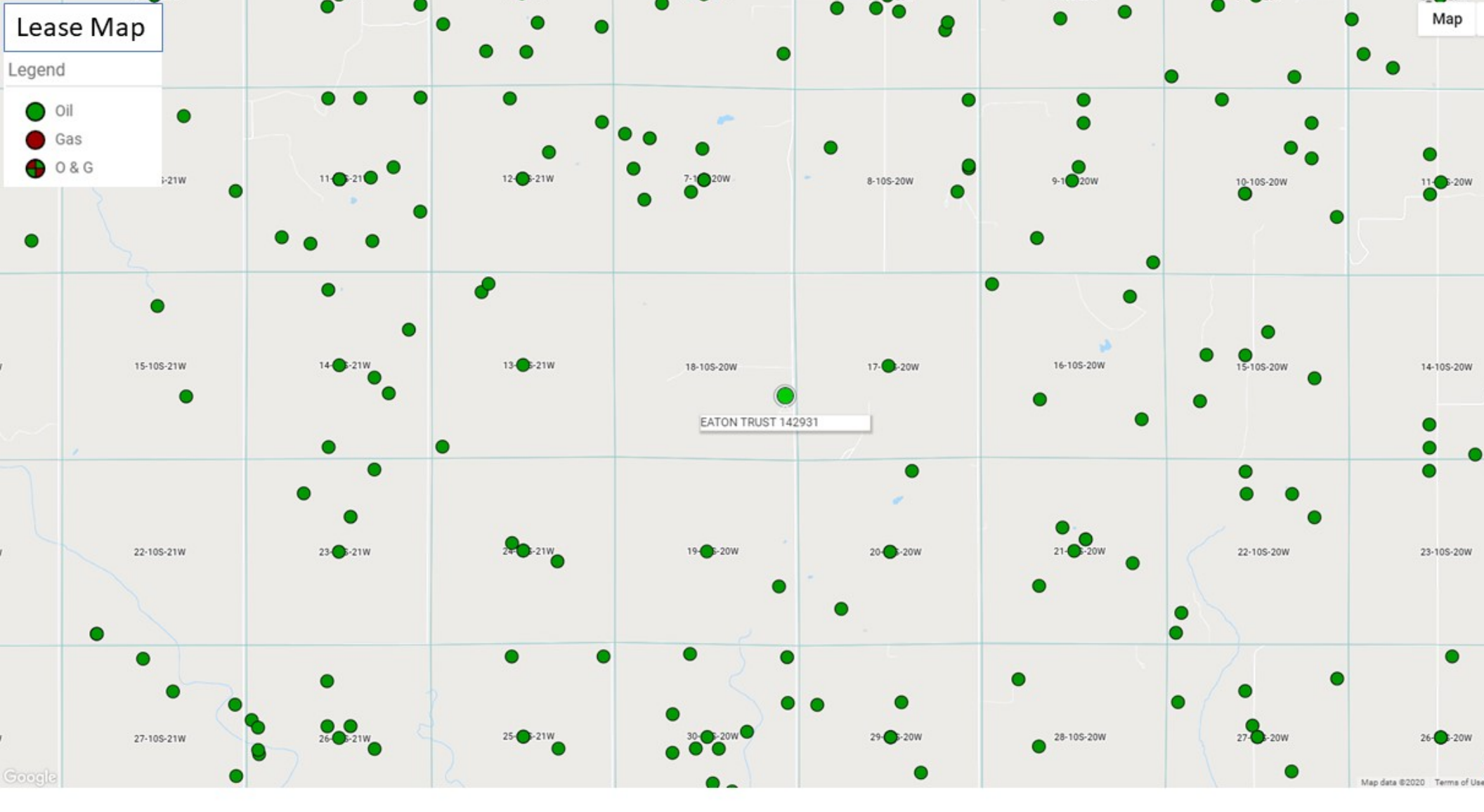
**Total Well Count: 2**





*Maps*

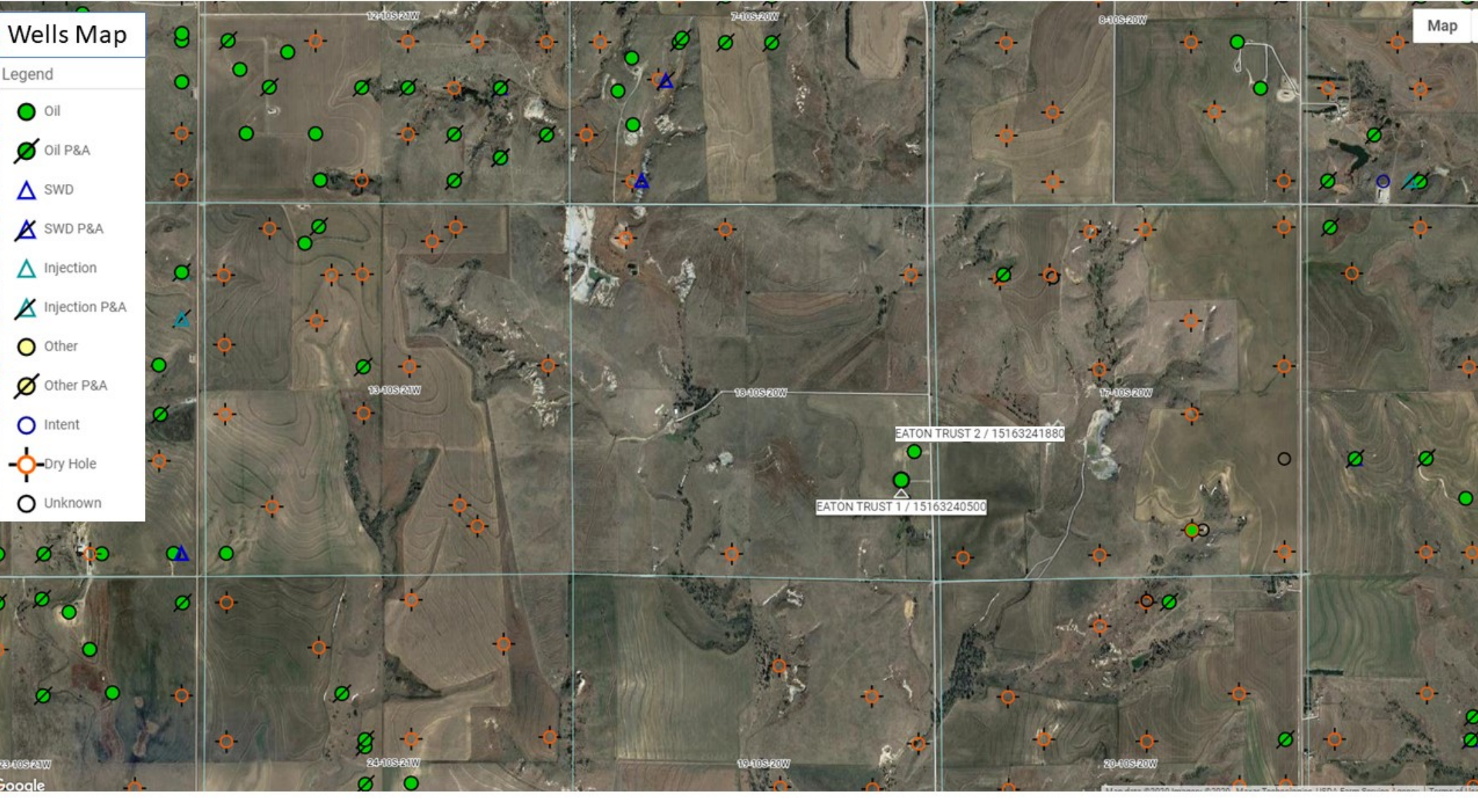




# Wells Map

## Legend

- Oil
- Oil P&A
- SWD
- SWD P&A
- Injection
- Injection P&A
- Other
- Other P&A
- Intent
- Dry Hole
- Unknown



Map

EATON TRUST 2 / 15163241880

EATON TRUST 1 / 15163240500